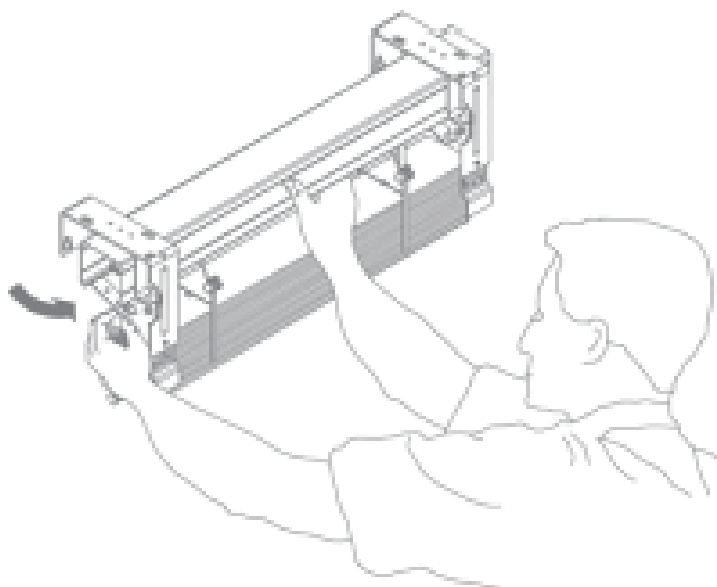
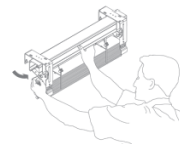


EXTERNAL
VENETIAN BLINDS

AiKON
DISTRIBUTION

Assembly
instructions

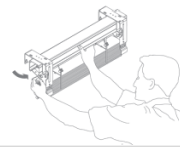




GENERAL ASSEMBLY RECOMMENDATIONS

The assembly of the surface-mounted roller shutters should be carried out by trained staff who are familiar with the regulations and safety rules, as well as with the applicable building regulations.

- The assembly site must be properly prepared and secured.
- Take special care when working at heights and when working with electrical devices.
- The installation team should be equipped with protective clothing (gloves, goggles) and, if working at height, with fall protection equipment, i.e. harnesses, belts, etc.
- After assembly, the correct operation of the roller shutter should be re-checked.
- Keep the site clean after work is completed, remove any debris and waste material left over during installation.
- The product can be used after the assembly work is completely finished.
- Provide training to the user on how to use the product, and issue a warranty card.
- Affix the sticker enclosed with these instructions to the upper trough of the roller shutter to certify its compliance with the EN 13659:2004 standard.



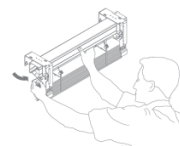
GENERAL ASSEMBLY INSTRUCTIONS

1. Guidelines for measuring surface-mounted roller shutters: recess, window, etc.

The measurement and installation should be carried out by a trained assembly worker. The method of measuring the location of an external shutter is identical for all types of shutters. Always measure the width and height in at least three positions (at the top, bottom and centre of the opening). Production sizes are always the smallest measured values. Measurements are only taken when the window is set into the wall including the sills. When measuring, the size of the slats box must be taken into account. This size is important, as it is usually necessary to leave enough space above the window to accommodate the entire slats box. Shutters must be ordered according to the order template. The manufacturer cannot be held responsible for incorrect measurements.

2. General guidelines for the assembly of surface-mounted roller shutters

There are two basic ways of attaching surface-mounted roller shutters: to the window frame, the façade structure or directly to the wall. In these two cases, the top profile bracket is fitted as standard. The main differences occur when the surface-mounted roller slats are guided by steel wires or rails. Depending on the type of external blinds, different guide or steel wire fixing elements can be used. From the aesthetics point of view, as well as weather conditions, we recommend protecting the mechanisms of the shutters by using a cover or taking into account the recess above the window by the designer.

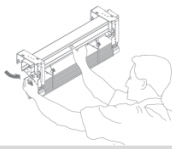


a) Assembly to the window frame

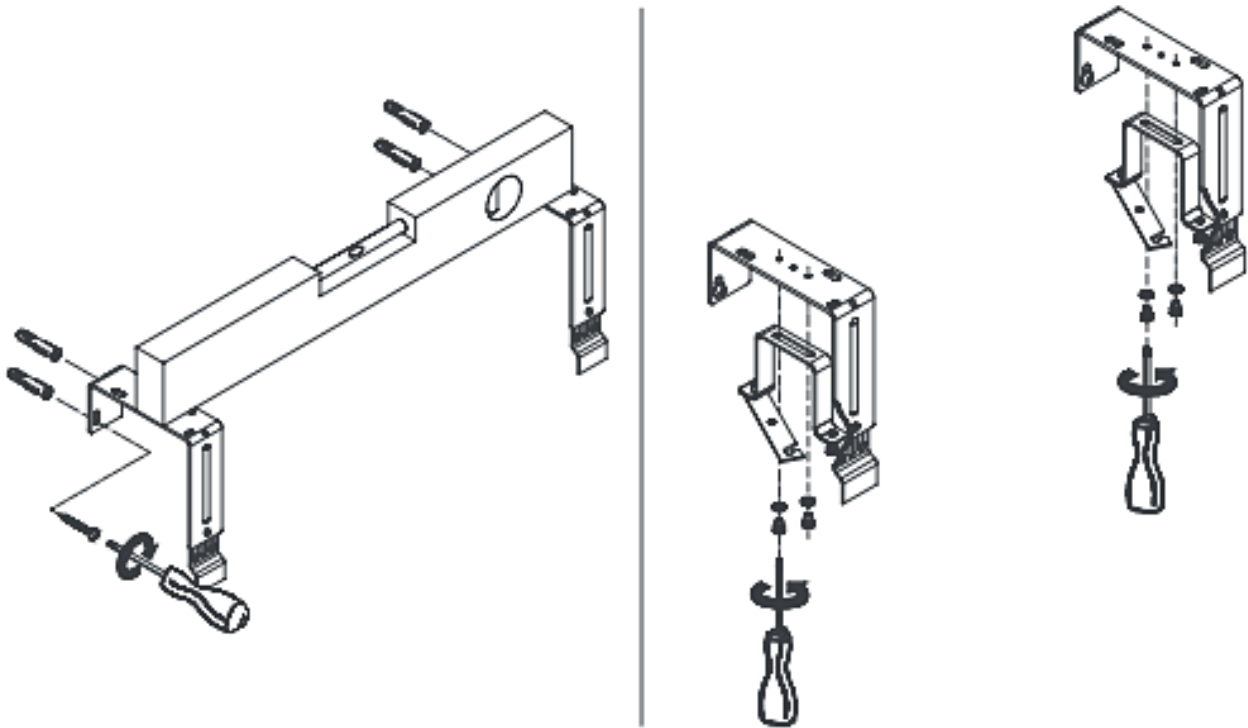
Assembly to the window frame is a more complex installation method and customized set of fixing components is used for installation. The mounting bracket for the top profile of the blinds is screwed to the top of the window frame. We secure the pulled-up blind in the previously screwed brackets and secure the platetop profile bracket with screws. The next step is to prepare an opening for the conduit of the control mechanisms to the inside of the house. Depending on the control method, this will be the hole prepared for the crank or the electric cable. Next, the blind needs to be lowered to the bottom position. Then attach the lower cord holders. Pre-tension the cords by tightening them with screws. The final tension of the cords is done by tightening the handle. On a blind with the slats guided in guides, the guide brackets will be fitted and then the guides. After checking the correct operation of the blinds inside the house, we install a conduit for the crank or an electrical connection. In the case of electrical control, electrical connections must be fitted, which can only be done by a suitably qualified specialist.

b) Mounting to the wall

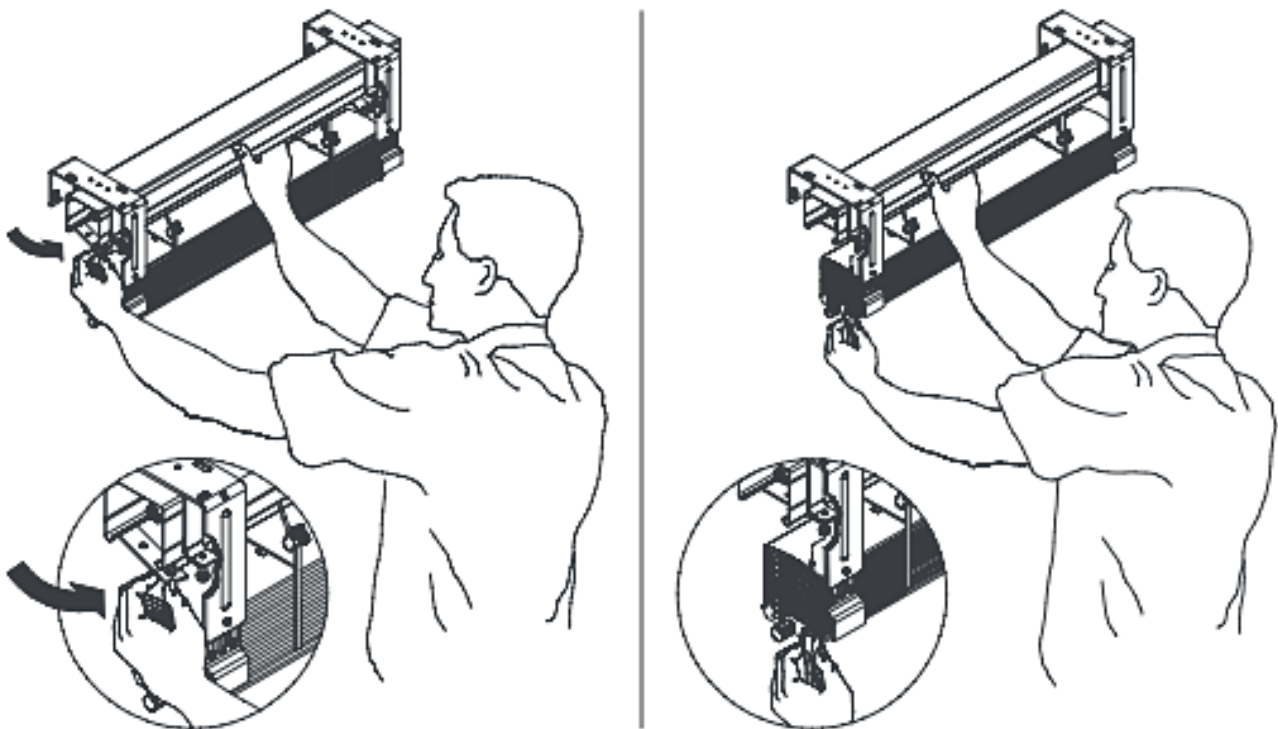
The mounting brackets for the upper trough of the blind will be attached to the previously prepared structure or directly to the wall of the building. The blind that has been pulled up is fixed in the previously screwed brackets and secured with the gutter bracket plate using screws. An opening is then prepared for the passage of the control mechanisms inside the house. Depending on the control method, a hole will be prepared for the grommet for the crank or the electric cable. Next, the blind must be lowered to the lower position. Then attach the lower cable holders. Pre-tension the cables by tightening them with screws. The final tension of the cords is done by tightening the handle nut. In the guided blind option, the guide brackets will be fitted and the guides will then be fitted. Once the correct operation of the blind has been checked inside the house, we install the conduit for the crank or the electrical connection. In the case of electric control, you will need to install the electrical connections, which can only be carried out by someone with the relevant qualifications.

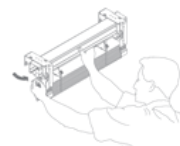


Assembly of top profile bracket

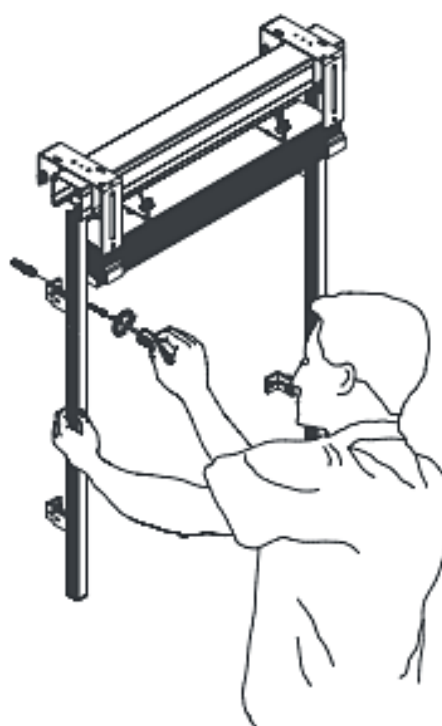
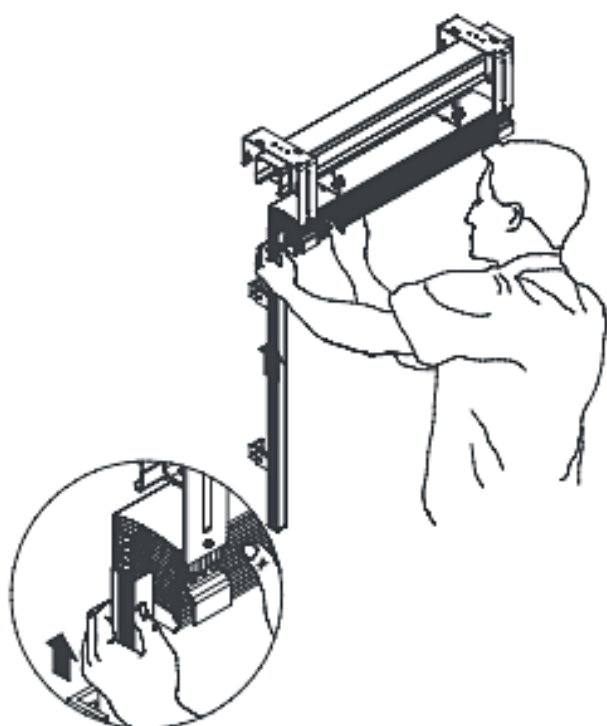


Installation of roller shutters

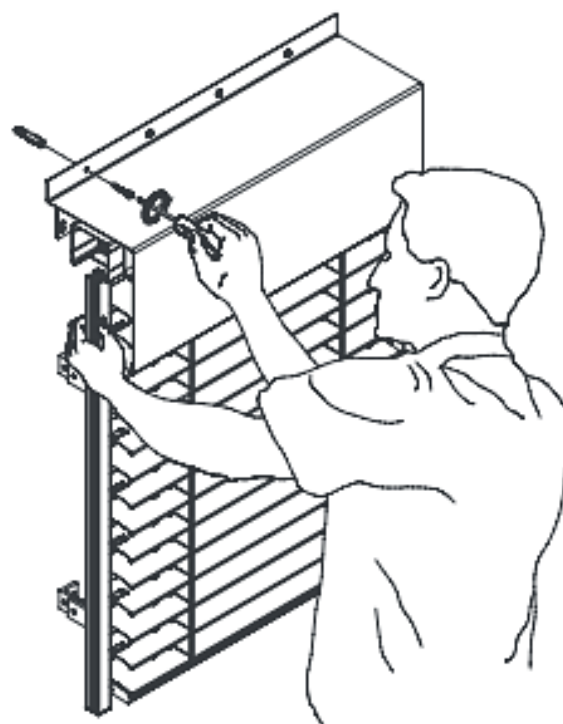
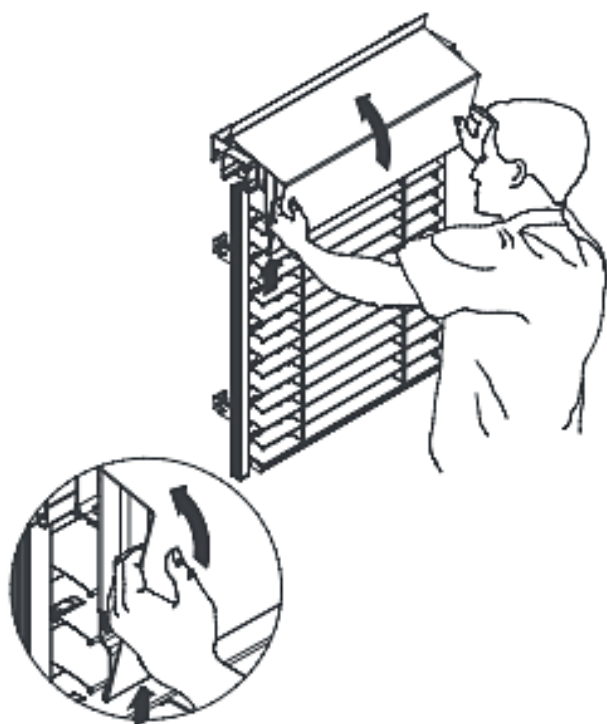


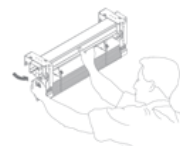


Guides installation



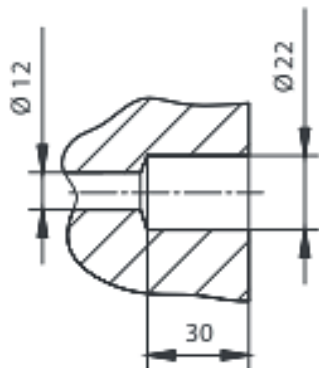
Installation of grille



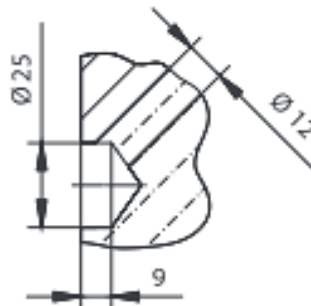


Recommended dimensions [mm] of bores for installation of grommets:
a) 90°, b) 45°

a) 90° passage



b) 45° passage



Selection of the number of brackets and extensions

HEIGHT / WIDTH (mm)	Number of brackets per 1 bar	Number of top profile brackets
600	2	2
700	2	2
800	2	2
900	2	2
1000	2	2
1100	2	2
1200	2	2
1300	2	2
1400	2	2
1500	2	2
1600	3	3
1700	3	3
1800	3	3
1900	3	3
2000	3	3
2100	3	3
2200	3	3
2300	3	3
2400	3	3
2500	3	3
2600	4	4
2700	4	4
2800	4	4
2900	4	4
3000	4	4
3100	4	4
3200	4	4
3300	4	4
3400	4	4
3500	4	4
3600	5	5
3700	5	5
3800	5	5
3900	5	5
4000	5	5

Extension dimension (mm)	FROM	TO
100	145	190
150	195	240
200	245	390
250	295	340
300	345	390